



CORNER/RIGHT-HAND CLOSING ELEMENT TUYA B



The distinctive features of Tuya B are evident in the curved surfaces of the backrest, armrests, and seat areas, which give this bench system its unique character. The meticulous craftsmanship of the upholstery demonstrates exceptional skill and lends the overall design a high-quality touch. Tuya B is available with two leg options: very robust and stable, black, powder-coated steel legs or solid, tapered oak legs (natural). But it's not just the appearance that impresses – the seating comfort and ergonomics of Tuya are outstanding. The bench system – consisting of a 60 cm element, a 120 cm element, and a corner element in dining & lounge table height – is available with both a low and high backrest. It is important to note that benches with a high backrest must always be mounted to the wall to ensure maximum safety.

**€664.00**

## CORNER/RIGHT-HAND CLOSING ELEMENT TUYA B

## Your chosen variant

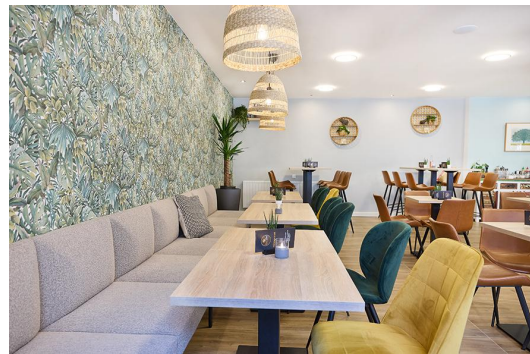
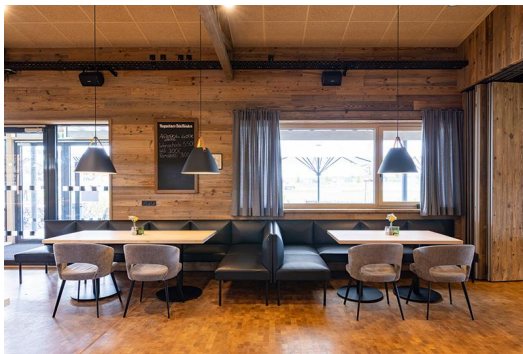
### Product details

Product Code:	1022AL
Model name:	Tuya B
Product type:	corner/right-hand closing element
Frame material:	steel
Frame colour:	Black satin powder coated
Seating material:	fabric Cosy
Seating colour:	green-brown
Assembly state:	not assembled
Produced in Germany or Europe:	yes
Sustainable:	yes

### Technical specifications

Product Code:	1022AL
Model name:	Tuya B
Product type:	corner/right-hand closing element
Application area:	indoors
Height:	84 cm
Seat height:	47 cm
Width:	65 cm
Seat width:	52 cm
Depth:	65 cm
Seat depth:	52 cm
Weight:	20.5 kg
GO IN Premium:	yes

## CORNER/RIGHT-HAND CLOSING ELEMENT **TUYA B**



## CORNER/RIGHT-HAND CLOSING ELEMENT TUYA B