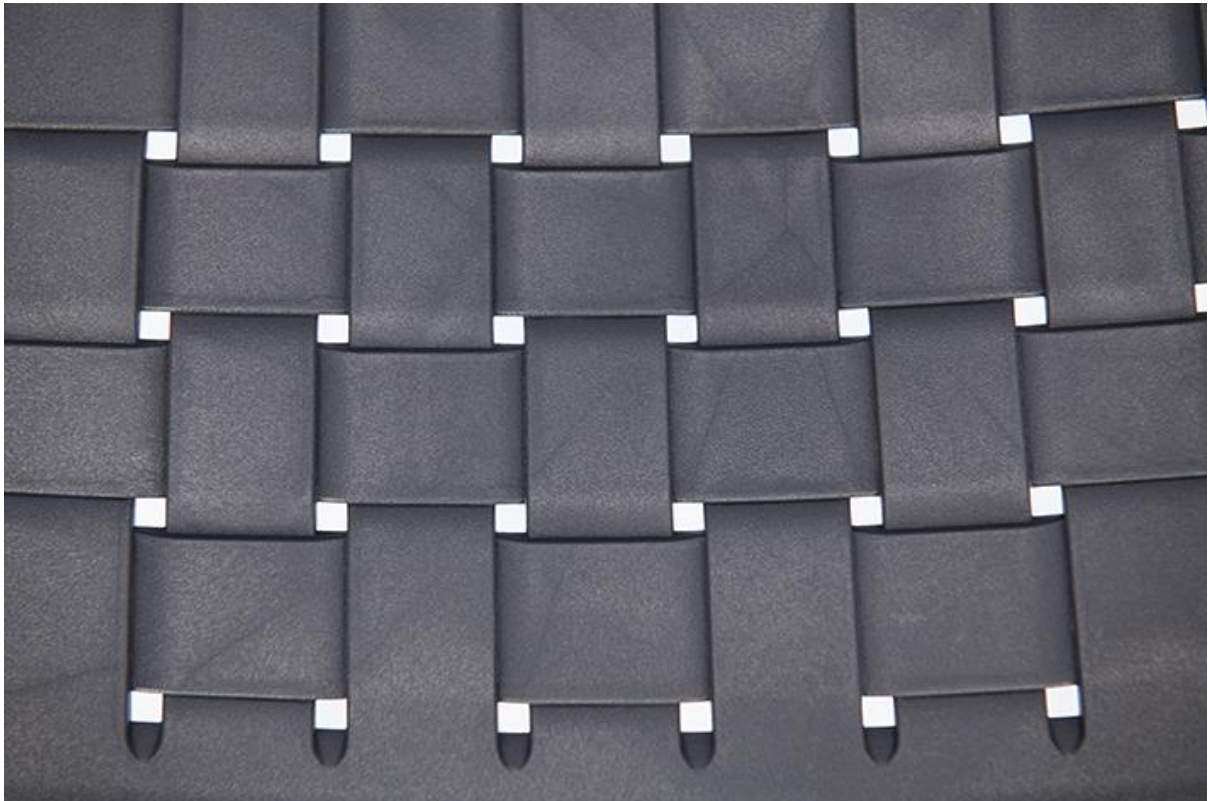




ARM CHAIR JOTO



Unique design and wicker look are typical of the stackable Joto Monobloc chair. It is made of glass-fibre-reinforced polypropylene, available in taupe and anthracite, with or without armrests.

€79.00

ARM CHAIR JOTO

Your chosen variant

Product details

Product Code:	100CB2
Model name:	Joto
Product type:	arm chair
Frame material:	P 1
Frame colour:	anthracite
Seating material:	reinforced glass fiber polypropylene
Seating colour:	anthracite
Assembly state:	completely assembled

Technical specifications

Product Code:	100CB2
Model name:	Joto
Product type:	arm chair
Application area:	outdoors
Height:	85 cm
Seat height:	46 cm
Width:	57 cm
Seat width:	41 cm
Depth:	56 cm
Seat depth:	45 cm
Armrest height:	68 cm
Weight:	4.2 kg
Stackable:	yes
Stacking quantity:	8

ARM CHAIR JOTO



ARM CHAIR JOTO